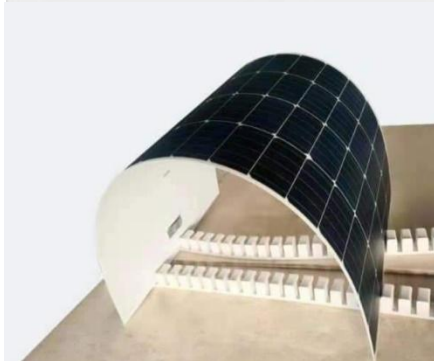
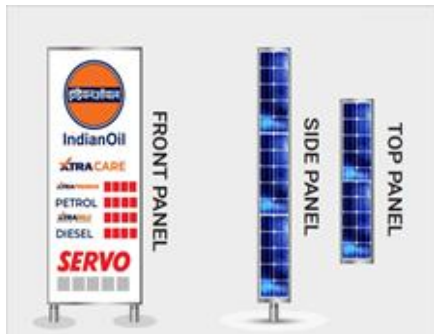


# Flexible Solar Panel



## Features

- No EB Grid Connection
- Easy to install
- Maintenance free
- Zero Carbon Footprint
- Pollution Free
- Eco-friendly

## Technical Specifications

- |                     |                            |
|---------------------|----------------------------|
| ▪ Model             | ▪ Eco-Smart Flexible Panel |
| ▪ System Capacity   | ▪ 1KW to 5KW               |
| ▪ Solar Panel       | ▪ 20W to 250W              |
| ▪ Battery Type      | ▪ LiFePO4                  |
| ▪ Battery Capacity  | ▪ As Required              |
| ▪ Customized Design | ▪ Available                |

## Applications

- Smart Parks / Zoo
- Pathways / Swimming Pool / Lawns
- University / Colleges / Schools
- Hospitals / Shopping Mall / Parking Lots
- Airport / Railway Station / Bus Stand
- Resorts / Beach
- Villa / Gateway Community
- Advertisement
- Branding with Social Responsibility